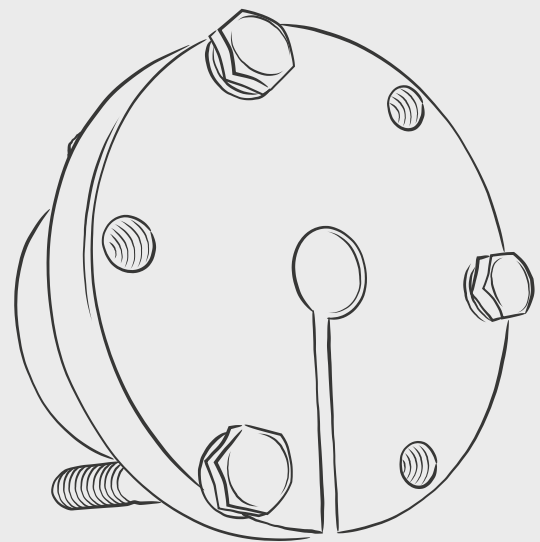
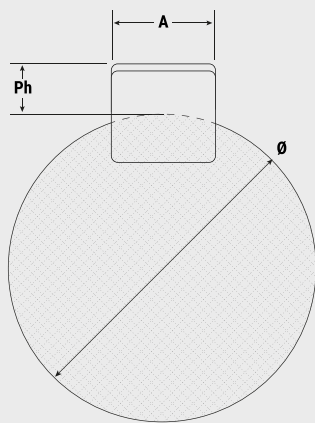


TRANSMISIÓN
DE POTENCIA

BUJES QD: EJES PERMISIBLES CON CUÑERO ESTÁNDAR

Sistemas de Fijación



Bujes QD - Diámetro del eje y cuñero estándar

Referencia	Eje	Cuñero en el Bujes	Peso (Kg.)
H	3/8"	Sin cuñero	0.4
	7/16"		0.4
	1/2"	1/8 x 1/16	0.4
	9/16"		0.4
	5/8"		0.4
	11/16"	3/16 x 3/32	0.3
	3/4"		0.3
	13/16"		0.3
	7/8"		0.3
	15/16"		0.3
	1"	1/4 x 1/8	0.3
	1-1/16"		0.3
	1-1/8"		0.3
	1-3/16"		0.2
	1-1/4"		0.2
	1-5/16"	5/16 x 1/16	0.2
	1-3/8"		0.2
	1-7/16"	3/8 x 1/16	0.2
	1-1/2"		0.2
	14MM	5 x 2.3MM	0.4
19MM	6 x 2.8MM	0.3	
20MM		0.3	
25MM	8 x 3.3MM	0.3	
30MM		0.2	
32MM	10 x 3.3MM	0.2	
JA	1/2"	1/8 x 1/16	0.2
	9/16"		0.2
	5/8"	3/16 x 3/32	0.2
	11/16"		0.2
	3/4"		0.2
	13/16"		0.2
	7/8"		0.2
	15/16"	1/4 x 1/8	0.2
	1"		0.1
	1-1/16"	1/4 x 1/16	0.1
	1-1/8"		0.1
	1-3/16"		0.1
	1-1/4"	Sin cuñero	0.1
	19MM		0.2
20MM	6 x 2.8MM	0.2	
22MM		0.2	
SH	1/2"	1/8 x 1/16	0.5
	9/16"		0.5
	5/8"	3/16 x 3/32	0.5
	11/16"		0.5
	3/4"		0.5
	13/16"		0.5
	7/8"		0.5
	15/16"	1/4 x 1/8	0.5
	1"		0.4
	1-1/16"		0.4
	1-1/8"		0.4
	1-3/16"		0.4
	1-1/4"		0.4
	1-5/16"	5/16 x 5/32	0.4
	1-3/8"		0.4
	1-7/16"		0.4
	1-1/2"	△ 3/8 x 1/16	0.3
	1-9/16"		0.3
1-5/8"		0.3	

Referencia	Eje	Cuñero en el Bujes	Peso (Kg.)
SH (Cont)	1-11/16"	Sin Cuñero	0.2
	24MM		0.5
	25MM	8 x 3.3MM	0.4
	28MM		0.4
	30MM		0.4
	32MM	10 x 3.3MM	0.4
SDS	35MM		0.3
	1/2"	1/8 x 1/16	0.7
	9/16"		0.7
	5/8"		0.7
	11/16"	3/16 x 3/32	0.7
	3/4"		0.7
	13/16"		0.7
	7/8"		0.7
	15/16"		0.7
	1"	1/4 x 1/8	0.7
	1-1/16"		0.6
	1-1/8"		0.6
	1-3/16"		0.6
	1-1/4"		0.6
	1-5/16"	5/16 x 5/32	0.6
	1-3/8"		0.6
	1-7/16"		0.5
	1-1/2"	3/8 x 3/16	0.5
1-9/16"		0.5	
1-5/8"		0.5	
SD	1-11/16"	△ 3/8 x 1/8	0.5
	1-3/4"		0.5
	1-13/16"	△ 1/2 x 1/16	0.4
	1-7/8"		0.4
	1-15/16"		0.4
	2"	Sin cuñero	0.3
	24MM	8 x 3.3MM	0.7
	25MM		0.7
	28MM		0.6
	30MM		0.6
	32MM	10 x 3.3MM	0.6
	35MM		0.6
	38MM		0.5
	40MM	12 x 3.3MM	0.5
42MM		0.5	
SD	1/2"	1/8 x 1/16	0.9
	9/16"		0.9
	5/8"	3/16 x 3/32	0.9
	11/16"		0.9
	3/4"		0.9
	13/16"		0.9
	7/8"		0.9
	15/16"	1/4 x 1/8	0.8
	1"		0.8
	1-1/16"		0.8
	1-1/8"		0.8
	1-3/16"		0.8
	1-1/4"		0.7
	1-5/16"	5/16 x 5/32	0.7
	1-3/8"		0.7
	1-7/16"		0.7
	1-1/2"	3/8 x 3/16	0.6
	1-9/16"		0.6
1-5/8"		0.6	
1-11/16"	△ 3/8 x 1/8	0.6	

Referencia	Eje	Cuñero en el Bujes	Peso (Kg.)
SD (cont)	1-3/4"	△ 3/8 x 1/8	0.5
	1-13/16"		0.5
	1-7/8"	△ 1/2 x 1/16	0.5
	1-15/16"		0.5
	2"	Sin cuñero	0.4
	24MM	8 x 3.3MM	0.8
	25MM		0.8
	28MM		0.8
	30MM		0.8
	32MM	10 x 3.3MM	0.7
35MM		0.7	
38MM		0.6	
40MM	12 x 3.3MM	0.6	
42MM		0.5	
SK	1/2"	1/8 x 1/16	1.7
	9/16"		1.7
	5/8"	3/16 x 3/32	1.7
	11/16"		1.6
	3/4"		1.6
	13/16"		1.6
	7/8"		1.6
	15/16"	1/4 x 1/8	1.6
	1"		1.6
	1-1/16"		1.5
	1-1/8"		1.5
	1-3/16"		1.5
	1-1/4"		1.5
	1-5/16"	5/16 x 5/32	1.4
	1-3/8"		1.4
	1-7/16"	3/8 x 3/16	1.4
	1-1/2"		1.4
	1-9/16"		1.3
1-5/8"		1.3	
1-11/16"		1.3	
1-3/4"		1.3	
1-13/16"	1/2 x 1/4	1.2	
1-7/8"		1.1	
1-15/16"		1.1	
2"		1.1	
2-1/16"		1.0	
2-1/8"		1.0	
2-3/16"	△ 1/2 x 3/16	1.0	
2-1/4"		0.9	
2-5/16"	△ 5/8 x 1/16	0.9	
2-3/8"		0.9	
2-7/16"		0.8	
2-1/2"		0.8	
2-5/8"	Sin cuñero	0.6	
24MM	8 x 3.3MM	1.6	
25MM		1.6	
28MM		1.5	
30MM		1.5	
32MM	10 x 3.3MM	1.5	
35MM		1.4	
38MM		1.4	
40MM	12 x 3.3MM	1.3	
42MM		1.3	
45MM	14 x 3.8MM	1.2	
48MM		1.1	
50MM		1.1	
55MM	16 x 4.3MM	1.0	

Piezas marcadas con △ contemplan un cuñero de menor profundidad. Esto implica que debe utilizarse una cuña de menor altura que el estándar (esta cuña no se provee con el buje).

Bujes QD - Diámetro del eje y cuñero estándar

Referencia	Eje	Cuñero en el Bujes	Peso (Kg.)
SF	1/2"	1/8 x 1/16	2.4
	9/16"		2.4
	5/8"	3/16 x 3/32	2.4
	11/16"		2.4
	3/4"		2.3
	13/16"		2.3
	7/8"		2.3
	15/16"	1/4 x 1/8	2.3
	1"		2.3
	1-1/16"		2.2
	1-1/8"		2.2
	1-3/16"		2.2
	1-1/4"		2.2
	1-5/16"		5/16 x 5/32
	1-3/8"	2.1	
	1-7/16"	3/8 x 3/16	2.1
	1-1/2"		2.0
	1-9/16"		2.0
	1-5/8"		2.0
	1-11/16"		2.0
	1-3/4"	1.9	
	1-13/16"	1/2 x 1/4	1.8
	1-7/8"		1.8
	1-15/16"		1.8
	2"		1.7
	2-1/16"		1.7
	2-1/8"		1.6
	2-3/16"		1.6
	2-1/4"	1.5	
	2-5/16"	△ 5/8 x 3/16	1.5
	2-3/8"		1.5
	2-7/16"		1.5
	2-1/2"	1.4	
	2-9/16"	△ 5/8 x 1/16	-
	2-5/8"		1.3
	2-11/16"		1.3
	2-3/4"		1.2
	2-13/16"	△ 3/4 x 1/16	1.1
	2-7/8"	△ 3/4 x 1/32	1.1
	2-15/16"	1.0	
	28MM	8 x 3.3MM	2.3
	30MM		2.2
	32MM	10 x 3.3MM	2.2
	35MM		2.1
	38MM		2.0
40MM	2.0		
42MM	12 x 3.3MM	2.0	
45MM		1.9	
48MM		1.8	
50MM		1.8	
55MM		1.6	
60MM	18 x 4.4MM	1.5	
65MM		1.4	
E	7/8"	3/16 x 3/32	5.4
	15/16"	1/4 x 1/8	5.4
	1"		5.3
	1-1/16"		5.3
	1-1/8"		5.2
	1-3/16"		5.2
	1-1/4"		5.1
	1-5/16"		5/16 x 5/32

Referencia	Eje	Cuñero en el Bujes	Peso (Kg.)
E (cont)	1-3/8"	5/16 x 5/32	5.1
	1-7/16"	3/8 x 3/16	5.0
	1-1/2"		4.9
	1-9/16"		4.9
	1-5/8"		4.8
	1-11/16"		4.8
	1-3/4"		4.7
	1-13/16"		1/2 x 1/4
	1-7/8"	4.6	
	1-15/16"	4.6	
	2"	4.5	
	2-1/16"	4.5	
	2-1/8"	4.4	
	2-3/16"	4.3	
	2-1/4"	4.3	
	2-5/16"	5/8 x 5/16	4.1
	2-3/8"		4.1
	2-7/16"		4.0
	2-1/2"		4.0
	2-9/16"		3.9
	2-5/8"		3.8
	2-11/16"		3.7
	2-3/4"	3.6	
	2-13/16"	3/4 x 3/8	3.5
	2-7/8"		3.3
	2-15/16"	△ 3/4 x 1/8	3.3
	3"		3.3
	3-1/8"		3.1
	3-3/16"		3.0
	3-1/4"		2.9
	3-5/16"	△ 7/8 x 1/8	2.8
	3-3/8"	△ 7/8 x 1/16	2.8
	3-7/16"		2.7
	3-1/2"		2.6
	28MM	8 x 3.3MM	4.6
	30MM		4.6
	32MM	10 x 3.3MM	4.6
	35MM		4.6
	38MM		4.5
	40MM		4.5
	42MM	12 x 3.3MM	4.4
	45MM		4.4
	48MM		4.4
	50MM		4.3
	55MM		4.3
60MM	18 x 4.4MM	4.1	
65MM		3.8	
70MM		3.6	
75MM	20 x 4.9MM	3.3	
80MM		3.1	
F	1"	1/4 x 1/8	8.8
	1-1/16"		8.8
	1-1/8"		8.7
	1-3/16"		8.6
	1-1/4"	8.6	
	1-5/16"	5/16 x 5/32	8.5
	1-3/8"		8.5
	1-7/16"	3/8 x 3/16	8.4
	1-1/2"		8.4
	1-9/16"		8.3
1-5/8"	8.2		

Referencia	Eje	Cuñero en el Bujes	Peso (Kg.)
F (cont)	1-11/16"	3/8 x 3/16	8.1
	1-3/4"		8.0
	1-13/16"	1/2 x 1/4	7.8
	1-7/8"		7.4
	1-15/16"		7.3
	2"		7.3
	2-1/16"		7.3
	2-1/8"		7.2
	2-3/16"		7.2
	2-1/4"	7.2	
	2-5/16"	5/8 x 5/16	7.2
	2-3/8"		7.0
	2-7/16"		7.0
	2-1/2"		7.0
	2-9/16"		6.9
	2-5/8"	6.7	
	2-11/16"	6.6	
	2-3/4"	6.5	
	2-13/16"	3/4 x 3/8	6.4
	2-7/8"		6.4
	2-15/16"		6.1
	3"		6.0
	3-1/8"		5.7
	3-3/16"	5.7	
	3-1/4"	5.4	
	3-5/16"	△ 7/8 x 3/16	5.4
	3-3/8"		5.4
	3-7/16"		5.4
	3-1/2"		5.2
	3-5/8"		4.8
	3-11/16"	4.7	
	3-3/4"	4.5	
	3-7/8"	△ 1 x 1/8	4.2
	3-15/16"		4.2
	4"	Sin cuñero	3.6
	45MM	14 x 3.8MM	7.3
	48MM		7.3
	50MM		7.2
	55MM		7.2
	60MM	18 x 4.4MM	7.2
	65MM		6.5
	70MM		6.5
	75MM	20 x 4.9MM	6.1
	80MM		5.7
	85MM	22 x 5.4MM	4.8
90MM	25 x 5.4MM	4.8	
J	1-1/2"	3/8 x 3/16	13.1
	1-9/16"		13.1
	1-5/8"		13.0
	1-11/16"		12.8
	1-3/4"		12.8
	1 13/16"	1/2 x 1/4	12.6
	1-7/8"		12.5
	1-15/16"		12.4
	2"		12.2
	2-1/16"		12.1
2-1/8"	12		
2-3/16"	5/8 x 5/16	11.9	
2-1/4"		11.8	
2-5/16"		11.6	
2-3/8"	11.6		

Piezas marcadas con △ contemplan un cuñero de menor profundidad. Esto implica que debe utilizarse una cuña de menor altura que el estándar (esta cuña no se provee con el buje).

Bujes QD - Diámetro del eje y cuñero estándar

Referencia	Eje	Cuñero en el Bujes	Peso (Kg.)
J (cont)	2-7/16"	5/8 x 5/16	11.4
	2-1/2"		11.3
	2-9/16"		11.1
	2-5/8"		11
	2-11/16"		10.8
	2-3/4"		10.7
	2-13/16"	3/4 x 3/8	10.5
	2-7/8"		10.5
	2-15/16"		10.5
	3"		10.2
	3-1/8"		9.8
	3-3/16"		9.7
	3-1/4"	9.5	
	3-5/16"	7/8 x 7/16	9.3
	3-3/8"		9.2
	3-7/16"		9.1
	3-1/2"		8.9
	3-5/8"		8.4
	3-11/16"		8.2
	3-3/4"	8.0	
	3-13/16"	1 x 1/2	8.0
	3-7/8"	△ 1 x 1/8	8
	3-15/16"		7.9
	4"		7.5
	4-1/8"		7.1
	4-3/16"		6.6
	4-1/4"		6.6
	4-3/8"		6.4
	4-7/16"		6.1
	4-1/2"		5.7
	50MM		14 x 3.8MM
	55MM	16 x 4.3MM	11.6
	60MM	18 x 4.4MM	11.6
65MM	18 x 4.4MM	11.5	
70MM	20 x 4.9MM	10.9	
75MM	20 x 4.9MM	9.9	
80MM	22 x 5.4MM	9.5	
85MM	22 x 5.4MM	9.3	
90MM	25 x 5.4MM	8.2	
95MM	25 x 5.4MM	7.6	
100MM	28 x 6.4 MM	7.5	
M	2"	1/2 x 1/4	28.4
	2-1/16"		28.4
	2-1/8"		28.3
	2-3/16"		28.1
	2-1/4"		27.9
	2-5/16"	5/8 x 5/16	-
	2-3/8"		27.5
	2-7/16"		27.3
	2-1/2"		27.1
	2-9/16"		27
	2-5/8"		26.7
	2-11/16"	26.4	
	2-3/4"	26.2	
	2-13/16"	3/4 x 3/8	26
	2-7/8"		25.8
2-15/16"	25.5		
3"	25.3		
3-1/8"	24.7		
3-3/16"	24.5		
3-1/4"	24.2		

Referencia	Eje	Cuñero en el Bujes	Peso (Kg.)	
M (cont)	3-5/16"	7/8 x 7/16	23.8	
	3-3/8"		23.6	
	3-7/16"		23.6	
	3-1/2"		23.2	
	3-5/8"		22.7	
	3-11/16"		22.2	
	3-3/4"	22.0		
	3-7/8"	1 x 1/2	21.3	
	3-15/16"		21.0	
	4"		20.9	
	4-1/8"		20.1	
	4-3/16"		19.8	
	4-1/4"		19.4	
	4-3/8"	18.8		
	4-7/16"	18.4		
	4-1/2"	18.2		
	4-5/8"	1-1/4 x 5/8	17.5	
	4-11/16"		16.8	
	4-3/4"		16.8	
	4-13/16"		16.8	
	4-7/8"		16.7	
	4-15/16"		16.4	
	5"	△ 1-1/4 x 1/4	16.2	
	5-1/8"		15.9	
	5-3/16"		15.9	
	5-1/4"		13.6	
	5-3/8"		13.6	
	5-7/16"		13.6	
	5-1/2"		13.2	
	70MM		20 x 4.9MM	24.5
	75MM		20 x 4.9MM	23.7
	80MM		22 x 5.4MM	24.9
	85MM	22 x 5.4MM	24.9	
90MM	25 x 5.4MM	23.5		
95MM	25 x 5.4MM	22.7		
100MM	28 x 6.4 MM	21.2		
110MM	28 x 6.4 MM	19.8		
115MM	32 x 7.4 MM	18.1		
120MM		16.6		
125MM		15.2		
130MM		14.0		
2-7/16"		5/8 x 5/16	39.7	
2-1/2"	39.5			
2-9/16"	-			
2-5/8"	38.7			
2-11/16"	-			
2-3/4"	38.2			
2-13/16"	3/4 x 3/8	-		
2-7/8"		-		
2-15/16"		37.3		
3"		37.0		
3-1/8"		-		
3-3/16"		-		
3-1/4"	35.8			
3-5/16"	7/8 x 7/16	35.4		
3-3/8"		35.1		
3-7/16"		34.8		
3-1/2"		34.4		
3-5/8"		34.3		
3-11/16"		33.4		
3-3/4"	33.0			

Referencia	Eje	Cuñero en el Bujes	Peso (Kg.)
N (cont)	3-7/8"	1 x 1/2	32.2
	3-15/16"		31.8
	4"		31.4
	4-3/16"		30.2
	4-1/8"		30.0
	4-1/4"		29.8
	4-5/16"	29.3	
	4-3/8"	28.9	
	4-7/16"	28.5	
	4-1/2"	28.0	
	4-9/16"	1-1/4 x 5/8	30.2
	4-5/8"		27.1
	4-11/16"		26.6
	4-3/4"		26.2
	4-7/8"		25.2
	4-15/16"		24.7
	5"	24.2	
	5-1/8"	△ 1-1/4 x 1/4	23.2
	5-3/16"		22.7
	5-1/4"		22.7
	5-5/16"		22.7
	5-3/8"		22.7
	5-7/16"		22.6
	5-1/2"	22.0	
	5-11/16"	△ 1-1/2 x 1/4	21.8
	5-3/4"		21.1
	5-7/8"		18.9
	5-15/16"	△ 1-1/2 x 1/8	19.0
	6"		18.9
	80MM	22 x 5.4MM	39.6
	90MM	25 x 5.4MM	36.6
	95MM		36.3
	100MM	28 x 6.4MM	34.8
110MM	32.2		
115MM	32 x 7.4 MM	29.4	
120MM		29.4	
125MM		27.8	
130MM		27.8	
135MM	36 x 4.4 MM	19.0	
140MM		22.0	
150MM		16.9	
P	3-7/16"	7/8 x 7/16	60.8
	3-15/16"	1 x 1/2	55.3
	4"		56.2
	4-3/16"		54.9
	4-1/4"		54.3
	4-3/8"		53.3
	4-7/16"		52.8
	4-1/2"	52.3	
	4-5/8"	1-1/4 x 5/8	51.2
	4-11/16"		50.7
	4-3/4"		50.1
	4-7/8"		49.0
	4-15/16"		48.4
	5"		46.7
	5-1/8"	46.7	
5-3/16"	46.0		
5-1/4"	45.5		
5-5/16"	45.0		
5-3/8"	44.3		
5-7/16"	43.7		

Piezas marcadas con △ contemplan un cuñero de menor profundidad. Esto implica que debe utilizarse una cuña de menor altura que el estándar (esta cuña no se provee con el buje).

Bujes QD - Diámetro del eje y cuñero estándar

Referencia	Eje	Cuñero en el Bujes	Peso (Kg.)
P (cont)	5-1/2"	1-1/4 x 5/8	43.0
	5-3/4"	△ 1-1/2 x 1/4	43.0
	5-7/8"		39.1
	5-15/16"		38.2
	6"		37.7
	6-1/16"		37.0
	6-1/4"		34.9
	6-7/16"		33.4
	6-1/2"		31.9
	6-3/4"	△ 1-3/4 x 1/8	30.5
	6-7/8"		28.0
	6-15/16"		26.4
	7"		25.7
	100MM	28 x 6.4MM	58.0
	110MM		58.0
	120MM	32 x 7.4MM	58.0
	130MM		51.7
	140MM	36 x 8.4MM	49.0
	145MM		46.3
	150MM		43.5
160MM	40 x 9.4 MM		43.5
170MM	40 x 4.4MM	36.3	
W	4-1/4"	1 x 1/2	117.9
	4-7/16"		116.4
	4-1/2"		115.8
	4-5/8"	1-1/4 x 5/8	-
	4-11/16"		-
	4-3/4"		113.4
	4-7/8"		-
	4-15/16"		-
	5"		110.8
	5-1/4"		-
	5-3/8"		106.7
	5-7/16"		-
	5-1/2"		105.3
	5-11/16"	-	
	5-3/4"	1-1/2 x 3/4	102.4
	5-7/8"		100.8
	5-15/16"		99.8
	6"		93.3
	6-1/4"		-
	6-7/16"		-
	6-1/2"	97.5	
	6-3/4"	△ 1-3/4 x 3/4	95.3
	6-7/8"		-
	6-15/16"		-
	7"		83.9
	7-1/8"		-
	7-1/4"		83.6
	7-3/8"		-
7-7/16"	-		
7-1/2"	79.7		

Referencia	Eje	Cuñero en el Bujes	Peso (Kg.)
W (cont)	7-3/4"	△ 2x1/4	78.0
	8"		72.4
	8-1/4"		-
	8-1/2"		-
	120MM	32 x 7.4MM	117.0
	130MM		112.5
	140MM	36 x 8.4MM	107.5
	145MM		105.0
	150MM		102.3
	160MM		40 x 9.4MM
170MM	40 x 9.4MM	90.55	
200MM	45 x 10.4MM	70.45	
S	5-1/2"	1-1/4 x 5/8	-
	5-3/4"	1-1/2 x 3/4	-
	5-7/8"		-
	6"		-
	6-1/4"		-
	6-7/16"		-
	6-1/2"		-
	6-3/4"	1-3/4 x 3/4	-
	6-15/16"		-
	7"		-
	7-1/4"		-
	7-1/2"	-	
	7-3/4"	2x3/4	-
	7-7/8"		-
	8"		-
	8-1/4"		-
	8-1/2"		-
	8-3/4"		-
	8-7/8"		-
	9"	-	
	9-1/4"	2-1/2x1/2	-
	9-3/8"		-
9-1/2"	-		
9-3/4"	-		
9-7/8"	△ 2-1/2x3/8		-
10"	△ 2-1/2x1/4	-	

Piezas marcadas con △ contemplan un cuñero de menor profundidad. Esto implica que debe utilizarse una cuña de menor altura que el estándar (esta cuña no se provee con el buje).

Este documento es propiedad de Intermec S.A., cualquier modificación o reproducción del contenido requiere aprobación previa.



Calle 17A No. 33 - 68 • Bogotá, D, C. Colombia, Sur América
Teléfono: +57 (601) 742 8300
Correo electrónico: ventas@intermec.com.co

www.intermec.com.co